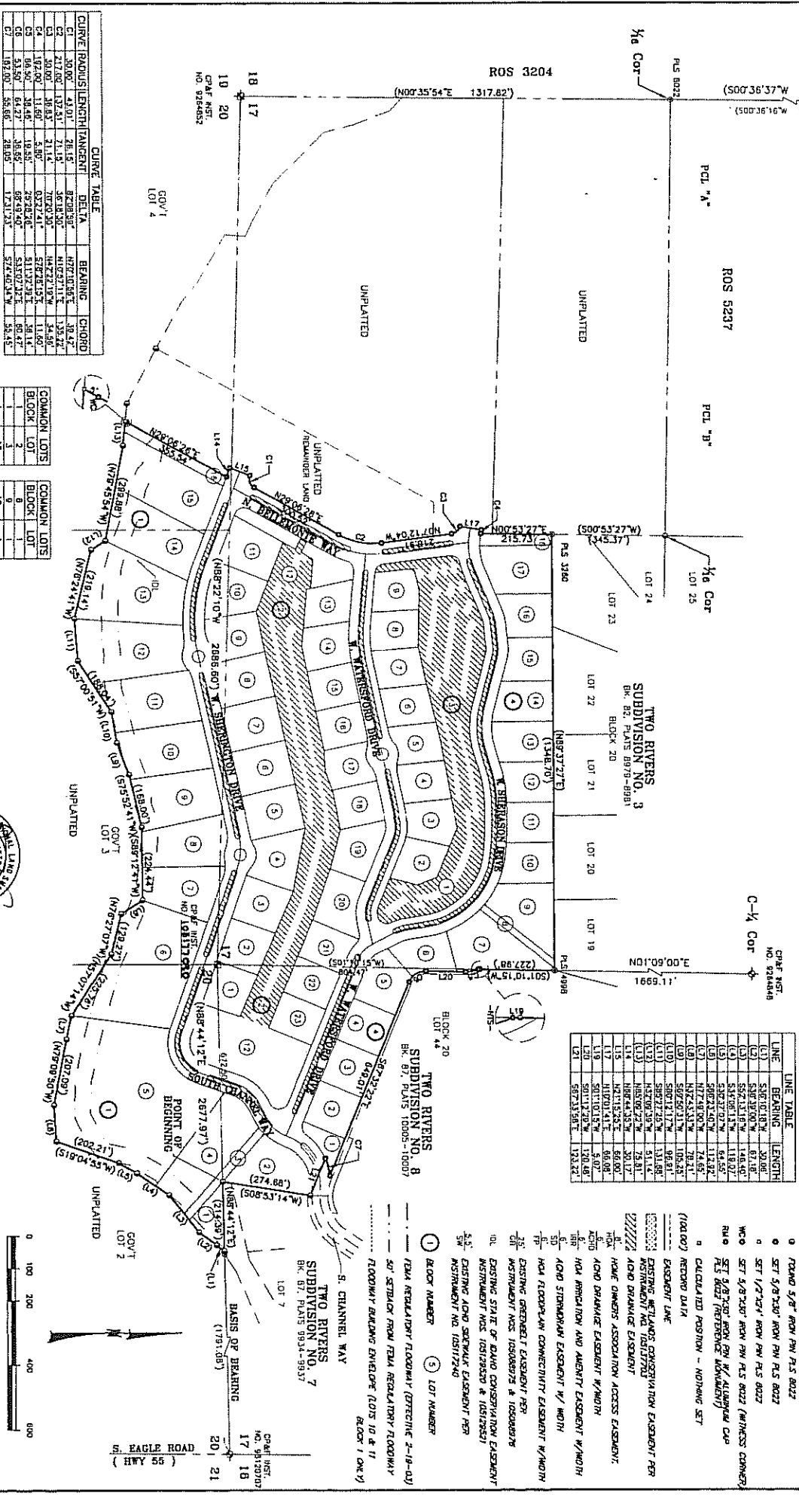


THE SHORES SUBDIVISION - PHASE 1

EX 94 84 11424

A PARCEL OF LAND SITUATED IN THE S1/2 OF SECTION 17,
AND IN GOVERNMENT LOTS 2, 3, AND 4 OF SECTION 20,
T.4N., R.1E., B.M., ADA COUNTY, IDAHO.
2006



CURVE TABLE

CURVE	RADIUS	LENGTH	TANGENT	DELTA	BEARING	CHORD
C1	30.00'	4.91'	28.15'	87.28°59'	N07°01'55"E	30.42'
C2	472.00'	137.53'	21.15'	87.28°59'	N107°57'11"E	135.42'
C3	50.00'	18.83'	21.15'	87.28°59'	N107°57'11"E	135.42'
C4	174.00'	30.48'	18.93'	87.28°59'	S17°42'15"E	31.80'
C5	174.00'	30.48'	18.93'	87.28°59'	S17°42'15"E	31.80'
C6	53.50'	6.42'	28.85'	88°49'42"	S15°02'32"E	30.42'
C7	182.00'	56.66'	28.05'	17°31'23"	S74°40'34"W	55.45'

RESTRICTIVE COVENANTS

BEARING AND OCCUPANCY IN THIS SUBDIVISION SHALL COMPLY WITH THE STANDARDS ESTABLISHED BY THE ARCHITECTURAL COVENANTS AS ESTABLISHED BY THE DEVELOPER AND AS ADOPTED BY THE SHORES HOMEOWNERS ASSOCIATION.

COMMON LOTS

COMMON LOT	COMMON LOT
1	2
2	3
3	4
4	5
5	6
6	7
7	8
8	9
9	10
10	11
11	12
12	13
13	14
14	15
15	16
16	17
17	18
18	19
19	20
20	21
21	22
22	23
23	24
24	25

LINE TABLE

LINE	BEARING	LENGTH
(1)	S87°01'55"W	30.42'
(2)	S07°32'00"W	61.80'
(3)	S57°31'16"W	146.40'
(4)	S31°08'11"W	118.02'
(5)	S32°37'02"W	94.85'
(6)	S80°23'30"W	113.82'
(7)	N17°42'15"E	78.51'
(8)	S67°50'31"W	105.52'
(9)	S87°21'17"W	98.81'
(10)	N82°06'22"W	78.81'
(11)	N82°06'22"W	78.81'
(12)	N107°57'11"E	80.00'
(13)	N107°57'11"E	80.00'
(14)	S01°12'50"W	5.07'
(15)	S01°12'50"W	120.48'
(16)	S87°33'58"E	173.22'

LEGEND

- BOUNDARY LINE
- FOUND ALUMINUM CAP MONUMENT
- SET 1" ALUMINUM CAP MONUMENT TO REPLACE MONUMENT DESTROYED DURING CONSTRUCTION
- FOUND BRASS CAP MONUMENT
- FOUND 5/8" IRON PIN AS NOTED
- FOUND 5/8" IRON PIN PLS 8022
- SET 5/8" IRON PIN PLS 8022
- SET 1/2" IRON PIN PLS 8022
- SET 5/8" IRON PIN PLS 8022 (WITNESS CORNER PLS 8022 (REFERENCE MONUMENT))
- CALCULATED POSITION - NOTHING SET
- RECORD DATA
- EXISTENT LINE
- EXISTING METAL PIN MONUMENT PER INSTRUMENT NOS. 105178200 & 105178201
- ACD DRAINAGE EASEMENT
- HOME OWNERS ASSOCIATION ACCESS EASEMENT
- ACD DRAINAGE EASEMENT W/NOTH
- ACD DRAINAGE EASEMENT W/NOTH
- ACD STORMDRAIN EASEMENT W/NOTH
- ACD STORMDRAIN EASEMENT W/NOTH
- ACD FLOODPLAIN CONNECTIVITY EASEMENT W/NOTH
- EXISTING GREENBELT EASEMENT PER INSTRUMENT NOS. 105088972 & 105088973
- EXISTING STATE OF IDAHO CONSERVATION EASEMENT INSTRUMENT NOS. 105178200 & 105178201
- EXISTING ACD SHELTER EASEMENT PER INSTRUMENT NO. 105112740
- 1 BLOCK NUMBER
- 2 LOT NUMBER
- 3 LOT NUMBER
- 4 FEMA REGULATORY FLOODWAY (EFFECTIVE 2-19-03)
- 50' SETBACK FROM FEMA REGULATORY FLOODWAY
- FLOODWAY BUILDING ENVELOPE (LOTS 10 & 11 BLOCK 1 ONE WAY)



TOOTHMAN-ORTON ENGINEERING COMPANY
7777 CAMDEN BOULEVARD
BOISE, IDAHO 83714
(208) 335-2288

NOTES

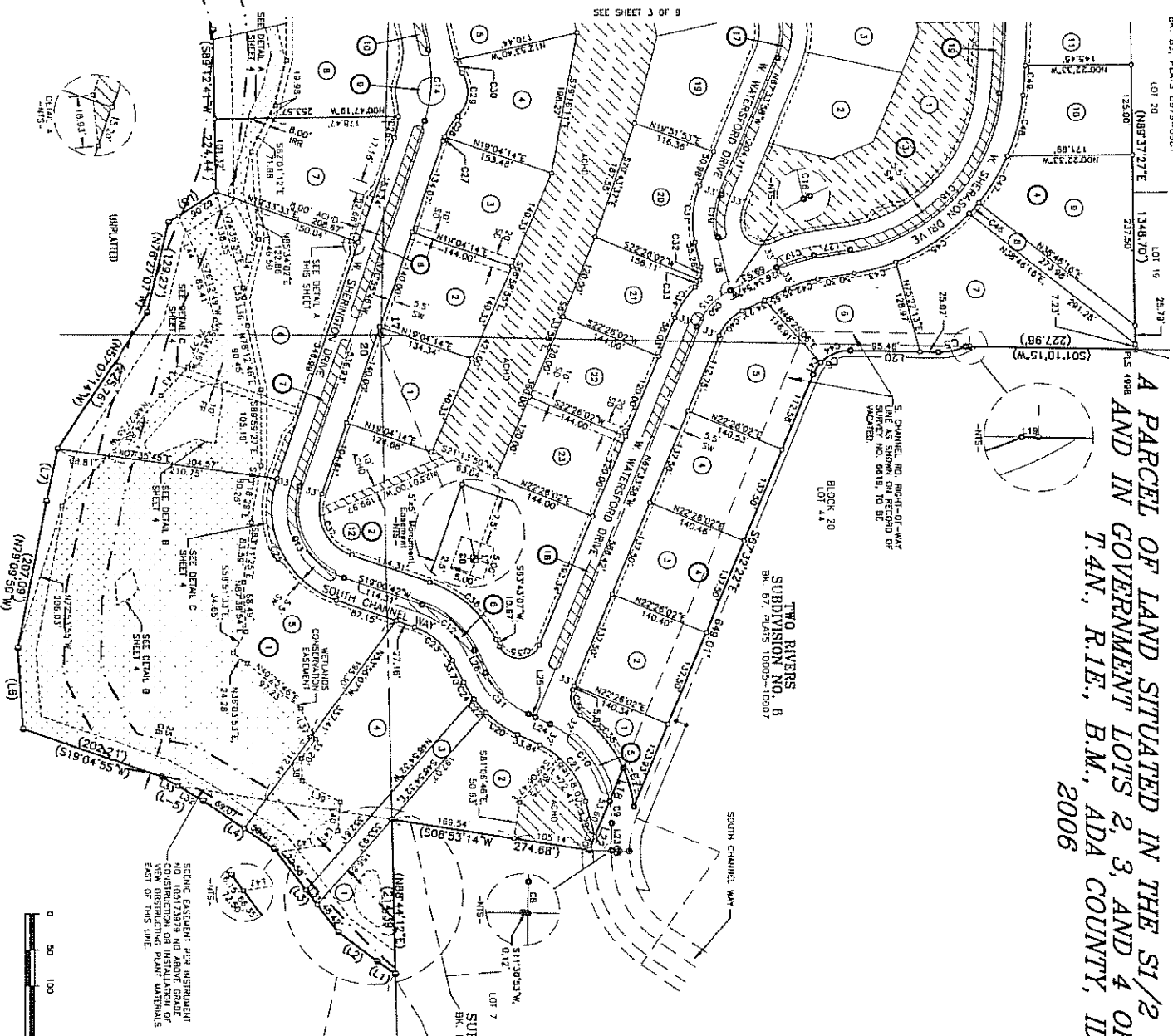
SEE NOTES ON SHEET B.

Alphabetical Subdivision Plats - BK94 Pg11424 SHORES SUB THE, Scale: 1 inch = 2.22 inches

SHEET NO. 1 OF 9

THE SHORES SUBDIVISION - PHASE 1

A PARCEL OF LAND SITUATED IN THE S1/2 OF SECTION 17,
AND IN GOVERNMENT LOTS 2, 3, AND 4 OF SECTION 20,
T.4N., R.1E., B.M., ADA COUNTY, IDAHO.
2006

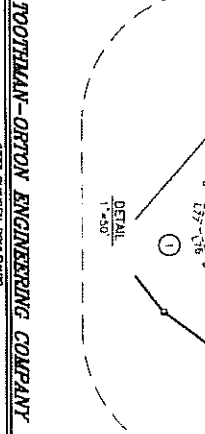
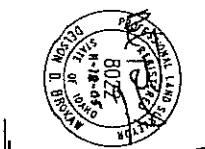


LINE TABLE

LINE	BEARING	LENGTH	CHORD
L1	S89°01'18"W	78.06'	78.06'
L2	S89°01'18"W	87.18'	87.18'
L3	S89°01'18"W	146.40'	146.40'
L4	S89°01'18"W	189.87'	189.87'
L5	S89°01'18"W	113.82'	113.82'
L6	N07°44'00"W	74.85'	74.85'
L7	S89°01'18"W	78.21'	78.21'
L8	S89°01'18"W	49.50'	49.50'
L9	S01°10'15"W	5.07'	5.07'
L10	S01°10'15"W	130.48'	130.48'
L11	S89°01'18"W	71.72'	71.72'
L12	S89°01'18"W	21.57'	21.57'
L13	S89°01'18"W	10.44'	10.44'
L14	S89°01'18"W	24.86'	24.86'
L15	S72°42'07"E	111.07'	111.07'
L16	N82°48'51"E	39.85'	39.85'
L17	N82°48'51"E	48.77'	48.77'
L18	N82°48'51"E	31.89'	31.89'
L19	N82°48'51"E	68.15'	68.15'
L20	N82°48'51"E	21.16'	21.16'
L21	N82°48'51"E	54.59'	54.59'
L22	N82°48'51"E	88.84'	88.84'
L23	N82°48'51"E	78.14'	78.14'
L24	N82°48'51"E	68.08'	68.08'
L25	N82°48'51"E	24.86'	24.86'
L26	N82°48'51"E	21.16'	21.16'
L27	N82°48'51"E	54.59'	54.59'
L28	N82°48'51"E	88.84'	88.84'
L29	N82°48'51"E	78.14'	78.14'
L30	N82°48'51"E	68.08'	68.08'
L31	N82°48'51"E	24.86'	24.86'
L32	N82°48'51"E	21.16'	21.16'
L33	N82°48'51"E	54.59'	54.59'
L34	N82°48'51"E	88.84'	88.84'
L35	N82°48'51"E	78.14'	78.14'
L36	N82°48'51"E	68.08'	68.08'
L37	N82°48'51"E	24.86'	24.86'
L38	N82°48'51"E	21.16'	21.16'
L39	N82°48'51"E	54.59'	54.59'
L40	N82°48'51"E	88.84'	88.84'

CURVE TABLE

CURVE	RADIUS	LENGTH	ANGENT	DELTA	CHORD
C1	86.40'	28.46'	19.45'	28.28'	38.14'
C2	53.50'	44.27'	36.65'	53.07'	58.14'
C3	182.00'	55.69'	28.05'	173.14'	95.45'
C4	150.00'	61.22'	30.38'	160.13'	97.24'
C5	150.00'	40.00'	25.82'	153.00'	75.00'
C6	125.00'	81.31'	41.27'	144.72'	135.05'
C7	100.00'	127.18'	60.70'	127.18'	196.16'
C8	100.00'	100.42'	51.95'	100.42'	141.48'
C9	100.00'	70.28'	36.67'	100.00'	100.00'
C10	100.00'	14.22'	6.82'	99.42'	100.00'
C11	100.00'	71.72'	36.65'	100.00'	100.00'
C12	100.00'	80.81'	41.27'	100.00'	100.00'
C13	100.00'	52.87'	28.66'	100.00'	100.00'
C14	100.00'	104.04'	54.67'	100.00'	100.00'
C15	100.00'	25.82'	12.87'	100.00'	100.00'
C16	100.00'	71.72'	36.65'	100.00'	100.00'
C17	100.00'	31.89'	15.93'	100.00'	100.00'
C18	100.00'	41.27'	20.94'	100.00'	100.00'
C19	100.00'	19.45'	9.82'	100.00'	100.00'
C20	100.00'	80.81'	41.27'	100.00'	100.00'
C21	100.00'	11.81'	5.91'	100.00'	100.00'
C22	100.00'	11.81'	5.91'	100.00'	100.00'
C23	100.00'	11.81'	5.91'	100.00'	100.00'
C24	100.00'	11.81'	5.91'	100.00'	100.00'
C25	100.00'	11.81'	5.91'	100.00'	100.00'
C26	100.00'	11.81'	5.91'	100.00'	100.00'
C27	100.00'	11.81'	5.91'	100.00'	100.00'
C28	100.00'	11.81'	5.91'	100.00'	100.00'
C29	100.00'	11.81'	5.91'	100.00'	100.00'
C30	100.00'	11.81'	5.91'	100.00'	100.00'



TOOTHMAN-ORTON ENGINEERING COMPANY
3777 S. GARDEN BLVD.
BOISE, IDAHO 83734
(208) 333-2888

THE SHORES SUBDIVISION - PHASE 1

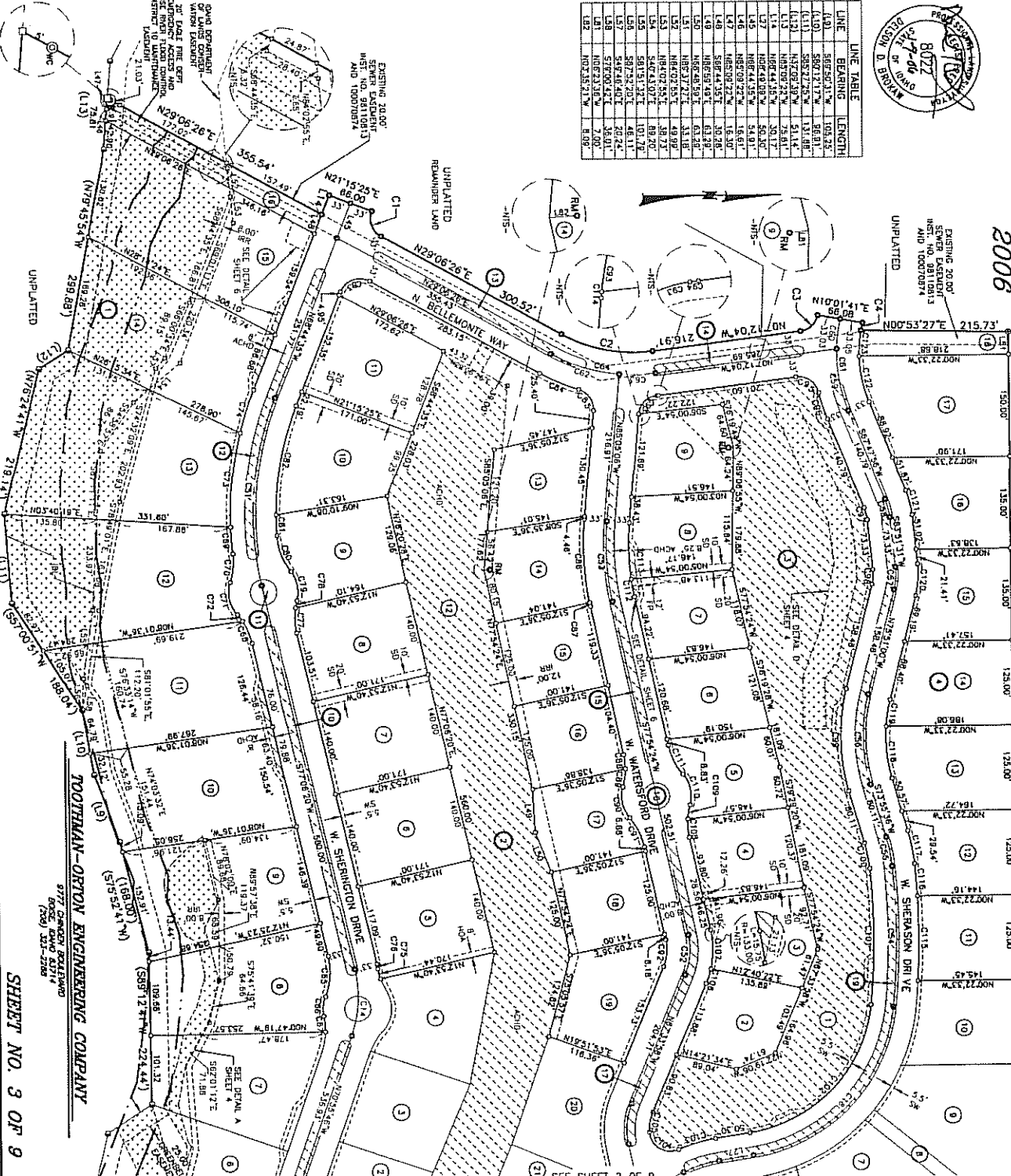
A PARCEL OF LAND SITUATED IN THE S1/2 OF SECTION 17,
AND IN GOVERNMENT LOTS 2, 3, AND 4 OF SECTION 20,
T.4N., R.1E., B.M., ADA COUNTY, IDAHO,
2006

TWO RIVERS
SUBDIVISION NO. 3
BK. 82, PAGES 897-898

CURVE	RADIUS	LENGTH	TANGENT	DELTA	BEARING	CHORD
C1	30.00'	4.401'	26.18'	92.68°58'	N101°31'12"	1.877'
C2	217.00'	137.51'	211.5'	92°15'	N122°21'10"	134.68'
C3	182.00'	136.00'	51.55'	92°22'41"	S72°23'43"	11.60'
C4	180.00'	100.42'	51.55'	11°37'54"	S11°37'54"	99.17'
C5	245.00'	321.29'	188.98'	75°16'47"	N65°23'02"	239.24'
C6	471.00'	289.72'	144.68'	34°09'05"	N65°23'02"	228.61'
C7	100.00'	100.00'	141.42'	120°00'	N65°23'02"	141.42'
C8	100.00'	100.00'	141.42'	120°00'	N65°23'02"	141.42'
C9	100.00'	100.00'	141.42'	120°00'	N65°23'02"	141.42'
C10	100.00'	100.00'	141.42'	120°00'	N65°23'02"	141.42'
C11	100.00'	100.00'	141.42'	120°00'	N65°23'02"	141.42'
C12	100.00'	100.00'	141.42'	120°00'	N65°23'02"	141.42'
C13	100.00'	100.00'	141.42'	120°00'	N65°23'02"	141.42'
C14	100.00'	100.00'	141.42'	120°00'	N65°23'02"	141.42'
C15	100.00'	100.00'	141.42'	120°00'	N65°23'02"	141.42'
C16	100.00'	100.00'	141.42'	120°00'	N65°23'02"	141.42'
C17	100.00'	100.00'	141.42'	120°00'	N65°23'02"	141.42'
C18	100.00'	100.00'	141.42'	120°00'	N65°23'02"	141.42'
C19	100.00'	100.00'	141.42'	120°00'	N65°23'02"	141.42'
C20	100.00'	100.00'	141.42'	120°00'	N65°23'02"	141.42'
C21	100.00'	100.00'	141.42'	120°00'	N65°23'02"	141.42'
C22	100.00'	100.00'	141.42'	120°00'	N65°23'02"	141.42'
C23	100.00'	100.00'	141.42'	120°00'	N65°23'02"	141.42'



LINE	BEARING	LENGTH
L1	S85°56'31"W	105.45'
L2	S80°17'17"W	98.63'
L3	S85°27'25"W	131.08'
L4	N122°21'10"E	134.68'
L5	N65°23'02"E	211.50'
L6	N65°23'02"E	134.68'
L7	N65°23'02"E	134.68'
L8	N65°23'02"E	134.68'
L9	N65°23'02"E	134.68'
L10	N65°23'02"E	134.68'
L11	N65°23'02"E	134.68'
L12	N65°23'02"E	134.68'
L13	N65°23'02"E	134.68'
L14	N65°23'02"E	134.68'
L15	N65°23'02"E	134.68'
L16	N65°23'02"E	134.68'
L17	N65°23'02"E	134.68'
L18	N65°23'02"E	134.68'
L19	N65°23'02"E	134.68'
L20	N65°23'02"E	134.68'
L21	N65°23'02"E	134.68'
L22	N65°23'02"E	134.68'
L23	N65°23'02"E	134.68'
L24	N65°23'02"E	134.68'
L25	N65°23'02"E	134.68'
L26	N65°23'02"E	134.68'
L27	N65°23'02"E	134.68'
L28	N65°23'02"E	134.68'
L29	N65°23'02"E	134.68'
L30	N65°23'02"E	134.68'
L31	N65°23'02"E	134.68'
L32	N65°23'02"E	134.68'
L33	N65°23'02"E	134.68'
L34	N65°23'02"E	134.68'
L35	N65°23'02"E	134.68'
L36	N65°23'02"E	134.68'
L37	N65°23'02"E	134.68'
L38	N65°23'02"E	134.68'
L39	N65°23'02"E	134.68'
L40	N65°23'02"E	134.68'
L41	N65°23'02"E	134.68'
L42	N65°23'02"E	134.68'
L43	N65°23'02"E	134.68'
L44	N65°23'02"E	134.68'
L45	N65°23'02"E	134.68'
L46	N65°23'02"E	134.68'
L47	N65°23'02"E	134.68'
L48	N65°23'02"E	134.68'
L49	N65°23'02"E	134.68'
L50	N65°23'02"E	134.68'
L51	N65°23'02"E	134.68'
L52	N65°23'02"E	134.68'
L53	N65°23'02"E	134.68'
L54	N65°23'02"E	134.68'
L55	N65°23'02"E	134.68'
L56	N65°23'02"E	134.68'
L57	N65°23'02"E	134.68'
L58	N65°23'02"E	134.68'
L59	N65°23'02"E	134.68'
L60	N65°23'02"E	134.68'
L61	N65°23'02"E	134.68'
L62	N65°23'02"E	134.68'
L63	N65°23'02"E	134.68'
L64	N65°23'02"E	134.68'
L65	N65°23'02"E	134.68'
L66	N65°23'02"E	134.68'
L67	N65°23'02"E	134.68'
L68	N65°23'02"E	134.68'
L69	N65°23'02"E	134.68'
L70	N65°23'02"E	134.68'
L71	N65°23'02"E	134.68'
L72	N65°23'02"E	134.68'
L73	N65°23'02"E	134.68'
L74	N65°23'02"E	134.68'
L75	N65°23'02"E	134.68'
L76	N65°23'02"E	134.68'
L77	N65°23'02"E	134.68'
L78	N65°23'02"E	134.68'
L79	N65°23'02"E	134.68'
L80	N65°23'02"E	134.68'
L81	N65°23'02"E	134.68'
L82	N65°23'02"E	134.68'
L83	N65°23'02"E	134.68'
L84	N65°23'02"E	134.68'
L85	N65°23'02"E	134.68'
L86	N65°23'02"E	134.68'
L87	N65°23'02"E	134.68'
L88	N65°23'02"E	134.68'
L89	N65°23'02"E	134.68'
L90	N65°23'02"E	134.68'
L91	N65°23'02"E	134.68'
L92	N65°23'02"E	134.68'
L93	N65°23'02"E	134.68'
L94	N65°23'02"E	134.68'
L95	N65°23'02"E	134.68'
L96	N65°23'02"E	134.68'
L97	N65°23'02"E	134.68'
L98	N65°23'02"E	134.68'
L99	N65°23'02"E	134.68'
L100	N65°23'02"E	134.68'



Alphabetical Subdivision Plats - BK94 Pg11426 SHORES SUB THE PG 3, Scale: 1 inch = 2.21 Inches

SHEET NO. 3 OF 9
TOOTHMAN-ORTON ENGINEERING COMPANY
3777 CANBY BUILDING
BOISE, IDAHO 83718
(208) 333-2288