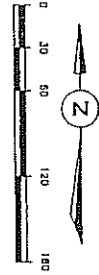
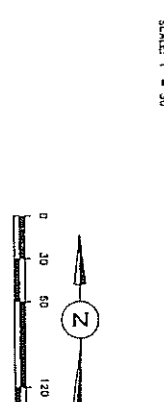
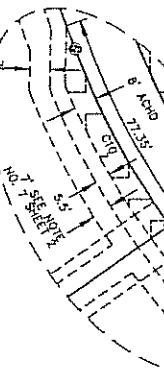
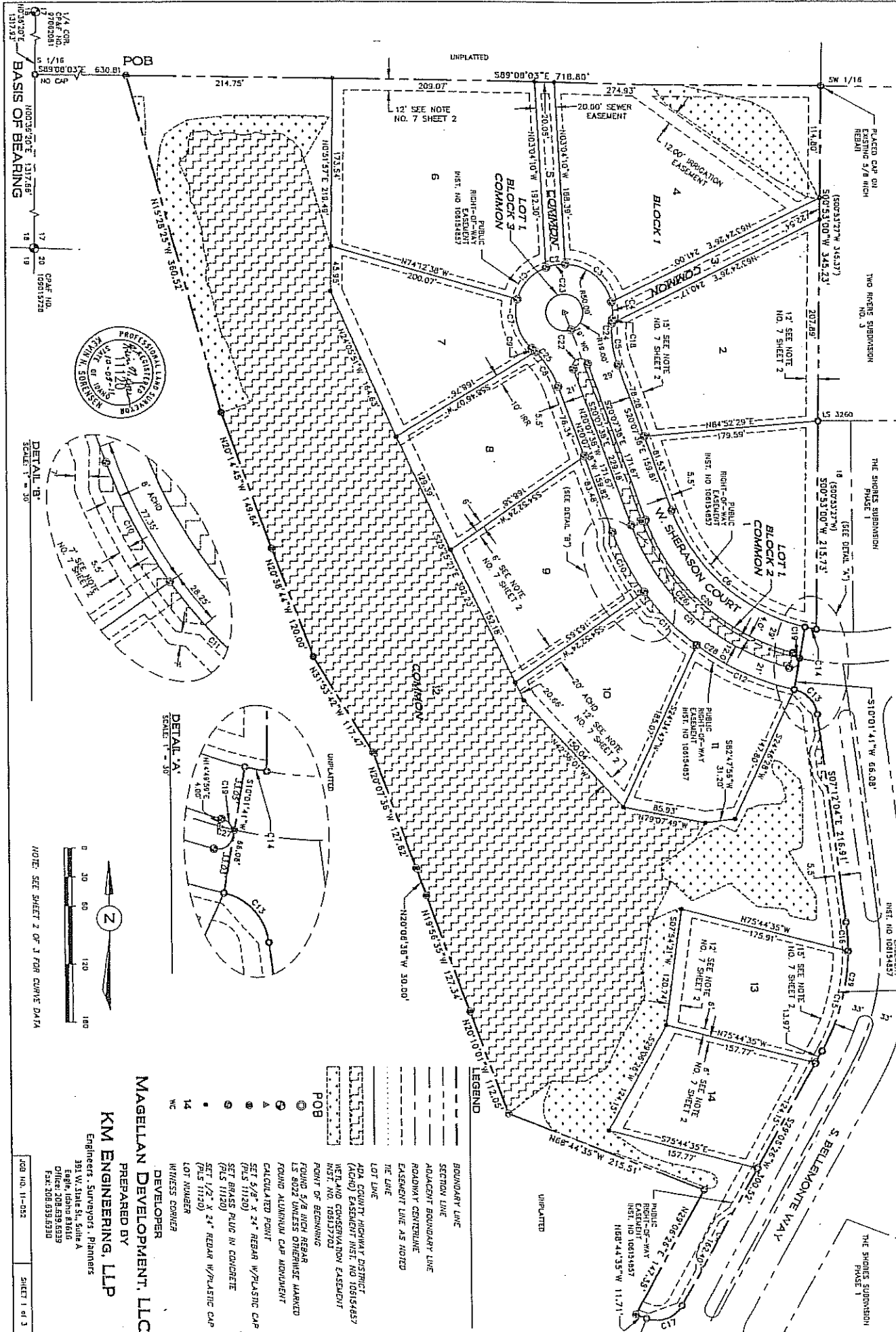


**WATERS EDGE SUBDIVISION**  
**PLAT OF**  
**A PARCEL OF LAND SITUATED IN THE SIZE OF THE SIZE OF SECTION 12,**  
**TOWNSHIP 4 NORTH, RANGE 1 EAST, BOISE MERIDIAN, CITY OF EAGLE,**  
**ADA COUNTY, IDAHO.**  
**2011**



**LEGEND**

- BOUNDARY LINE
- SECTION LINE
- ADJACENT BOUNDARY LINE
- ROADWAY CENTRAL LINE
- EASEMENT LINE AS NOTED
- THE LINE
- LOT LINE

**POB**

- ADA COUNTY HIGHWAY DISTRICT
- ADA COUNTY HIGHWAY DISTRICT (ACHD) EASEMENT INST. NO. 106194857
- NEPLAND CONSERVATION EASEMENT INST. NO. 106137201
- POINT OF BEGINNING
- ROUND 5/8" HIGH REBAR UNLESS OTHERWISE MARKED
- ROUND ALUMINUM CAP MONUMENT
- CALCULATED POINT
- SET 5/8" X 24" REBAR W/PLASTIC CAP (PLS 11120)
- SET BRASS PLUG IN CONCRETE (PLS 11120)
- SET 1/2" X 24" REBAR W/PLASTIC CAP (PLS 11120)
- LOT NUMBER
- WITNESS CORNER
- DEVELOPER

**MAGELLAN DEVELOPMENT, LLC**  
 DEVELOPER

**KM ENGINEERING, LLP**  
 PREPARED BY  
 Engineers - Surveyors - Planners  
 391 W. State St., Suite A  
 Eagle, Idaho 83616  
 Office: 208.639.6539  
 Fax: 208.639.6530



# PLAT OF WATERS EDGE SUBDIVISION

**APPROVAL OF CITY ENGINEER**  
I, THE UNDERSIGNED, CITY ENGINEER IN AND FOR THE CITY OF EAGLE, ADA COUNTY, IDAHO, DO HEREBY CERTIFY THAT I HAVE CHECKED THIS FINAL PLAT AND THAT THE EAGLE CITY RECORDERS RECORDING REGARDING FINAL PLANS HAVE BEEN SET.

*[Signature]*  
EAGLE CITY ENGINEER  
10-11-2011

**APPROVAL OF CITY COUNCIL**  
I, THE UNDERSIGNED, CITY CLERK IN AND FOR CITY OF EAGLE, ADA COUNTY, IDAHO, DO HEREBY CERTIFY THAT AT A REGULAR MEETING OF THE CITY COUNCIL, HELD ON THE 11<sup>TH</sup> DAY OF NOV 2011, THIS FINAL PLAT WAS APPROVED AND ACCEPTED.



*[Signature]*  
CITY CLERK  
EAGLE, IDAHO

**ADA COUNTY HIGHWAY DISTRICT COMMISSIONERS**  
THE FOREGOING PLAT WAS ACCEPTED AND APPROVED BY THE BOARD OF ADA COUNTY HIGHWAY DISTRICT COMMISSIONERS ON THE 22ND DAY OF NOVEMBER 2011.



*[Signature]*  
CHAIRMAN  
ADA COUNTY HIGHWAY DISTRICT

**CERTIFICATE OF COUNTY SURVEYOR**  
I, THE UNDERSIGNED, COUNTY SURVEYOR IN AND FOR ADA COUNTY, IDAHO, DO HEREBY CERTIFY THAT I HAVE CHECKED THIS PLAT AND THAT IT COMPLETS WITH THE STATE OF IDAHO CODE RELATING TO PLATS AND SURVEYS.



*[Signature]*  
ADA COUNTY SURVEYOR  
DATE: 10-7-2011  
PLS 5357

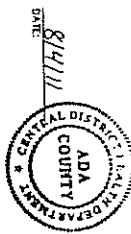
**CERTIFICATE OF SURVEYOR**  
I, KEVIN N. SORBERG, DO HEREBY CERTIFY THAT I AM A LAND SURVEYOR LICENSED BY THE STATE OF IDAHO, AND THAT THIS PLAT OF WATERS EDGE SUBDIVISION AS DESCRIBED IN THE CERTIFICATE OF OWNERS AND AS SHOWN ON THE ATTACHED DIVISIONS IS ACCURATELY REPRESENTS THE POINTS PLATTED THEREON, AND IS IN CONFORMANCE WITH THE STATE OF IDAHO CODE RELATING TO PLATS AND SURVEYS.



KEVIN N. SORBERG, PLS 11126

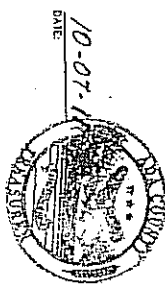
**HEALTH CERTIFICATE**  
SANITARY RESTRICTIONS AS REQUIRED BY IDAHO CODE, TITLE 50, CHAPTER 13 HAVE BEEN SATISFIED ACCORDING TO THE LETTER TO BEHOLD SANITARY RESTRICTIONS MAY BE REPOSED, IN ACCORDANCE WITH SECTION 50-132, IDAHO CODE, BY THE ISSUANCE OF A CERTIFICATE OF DISAPPROVAL.

*[Signature]*  
HEALTH OFFICER



**CERTIFICATE OF THE COUNTY TREASURER**  
I, THE UNDERSIGNED, COUNTY TREASURER IN AND FOR THE COUNTY OF ADA, STATE OF IDAHO, DO HEREBY CERTIFY THAT ANY AND ALL CURRENT AND OR DELINQUENT COUNTY PROPERTY TAXES FOR THE PROPERTY INCORPORATED AND ALL CURRENT SURVEYOR HAVE BEEN PAID IN FULL. THIS CONTRIBUTION IS VALID FOR THE NEXT THIRTY (30) DAYS ONLY.

*[Signature]*  
COUNTY TREASURER



**CERTIFICATE OF COUNTY RECORDER**

STATE OF IDAHO } 55  
ADA COUNTY }  
I HEREBY CERTIFY THAT THIS PLAT OF WATERS EDGE SUBDIVISION WAS FILED AT THE OFFICE OF KM ENGINEERING, AT 28 MINUTES PAST 1 O'CLOCK P.M., THIS 12 DAY OF OCT 2011 A.D. IN MY OFFICE AND WAS ONLY RECORDED AS BOOK 104 OF PLATS AT PAGE 1405 THRU 1407.  
INSTRUMENT NUMBER 11082651

*[Signature]*  
REC'D \$16.00

*[Signature]*  
EX-OFFICIO RECORDER

PREPARED BY  
**KM ENGINEERING, LLP**  
Engineers, Surveyors, Planners  
391 W. STATE ST., SUITE A  
EAGLE, IDAHO 83422  
PHONE: 208.338.4500  
FAX: 208.338.6930